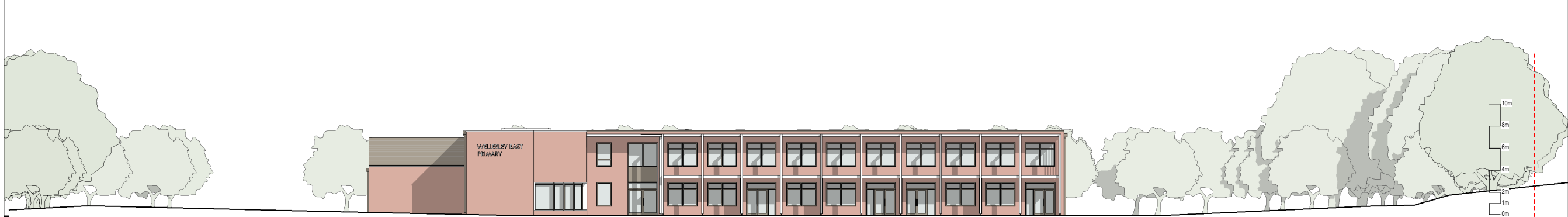


General Notes

1. This drawing is © copyright Hampshire County Council 2023. No unauthorised reproduction of any kind is permitted.
2. No dimensions to be scaled from this drawing. Verify all dimensions prior to construction. Immediately report any discrepancies on the document to the Architect/Contract Administrator. This document shall be read in conjunction with associated models, specifications and related consultant's documents.
3. Drawing to be read with all relevant Structural, M&E, Public Health, Landscape, Civils and Interiors drawings and specifications.
4. This map is reproduced from Ordnance Survey material with the permission of Ordnance Survey on behalf of the controller of Her Majesty's Stationery Office © Crown copyright. Unauthorised reproduction infringes Crown Copyright & may lead to prosecution or civil proceedings (100019180) 2023.

Hampshire County Council

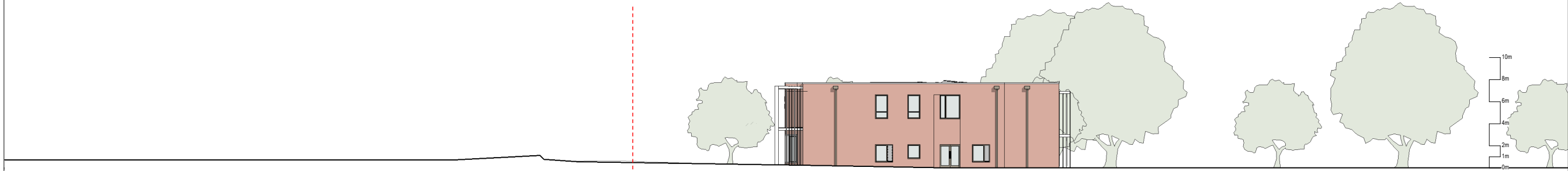
Notes:



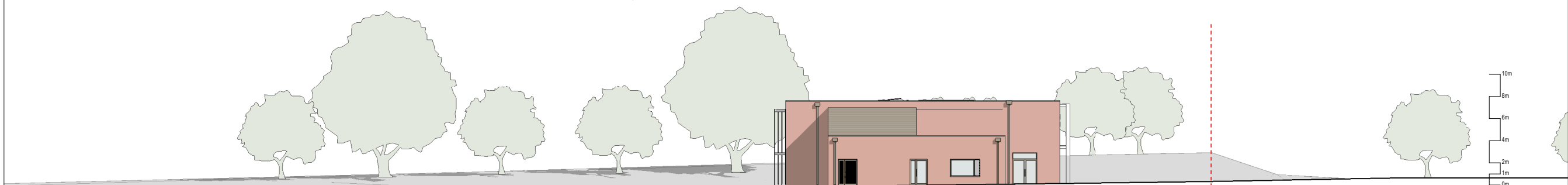
01 South West Elevation
1 : 200



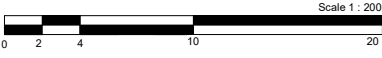
02 North East Elevation
1 : 200



03 South East Elevation
1 : 200



04 North West Elevation
1 : 200



Rev	Description	Date	By	Chkd
P2	Planning Submission	Nov '23	HCC	HCC
P1	Planning Submission	Aug '23	HCC	HCC

HCC Property Services,
Three Ministers House,
76 High Street, Winchester SO23
8UL

Property

Wellesley Eastern Primary
Aldershot, Hampshire

Proposed Elevations 1 of 2

SCALE	DRAWN	CHKD
As indicated @ A1	ET	FB
DRAWING No.		
project code - originator - volume - level - type - role - number	revision	version
P12462-HCC-PS-ZZ-DR-A-300	P02	.1
SUITABILITY		
code	description	
PLANNING		